

# PRODUCT DESCRIPTION



## **RST18** TRACKED STACKER

Length 18,30 m / 60'

Max. discharge height 8,90 m / 29'2"

Weight 11,0 t / 24,300 lbs



**MOBILE TRACK-MOUNTED STACKER**

**RST18**

**SHORT SET-UP TIME.  
COMPACT.  
EASY TO TRANSPORT.**



## INCREASE PRODUCTION CAPACITY & MINIMIZE OPERATING COSTS

Robust and compact Rockster stacker RST18 can be loaded and put back into operation in a short amount of time.

The operating costs are significantly lower compared to a wheel loader and the CO2 emissions are at a minimum.

It has been designed for use in combination with screening machines as well as crushers to enable impressive production capacity while reducing material handling costs.

The RST18 stacker creates large, conical and radial stockpiles, thus supporting crushing and screening

plants in their significant increase of daily production capacity.

The stacker comes with tracks, however wheeled option is also available, so the customer can choose the best option depending on individual terrain.

The mobile conveyor RST18 hydraulically folds and is operational within 10 minutes after delivery.

## FEATURES & BENEFITS

- Short set-up time
- Robust steel construction
- Hydraulic folding conveyor
- Optimal transport dimensions
- Optional wheeled mobile version

| PERFORMANCE     |                          |
|-----------------|--------------------------|
| Max. feed size: | 100 mm / 4"              |
| Performance:    | up to 450 t/h - 500 st/h |

| MAIN BELT   |               |
|-------------|---------------|
| Length:     | 18,30 m / 60' |
| Belt width: | 900 mm / 36"  |

| DISCHARGE HEIGHT |                  |
|------------------|------------------|
| Minimum:         | ~ 4,30 m / 14'1" |
| Maximum:         | ~ 8,90 m / 29'2" |

| FEED HOPPER     |  |
|-----------------|--|
| Length:         | 2,45 m / 8' 1/2"                         |
| Width:          | 1,89 m / 6'2"                            |
| *Max. capacity: | 1,5 m <sup>3</sup> / 1,8 yd <sup>3</sup> |

| TRACKS |                  |
|--------|------------------|
| Width: | 300 mm / 12"     |
| Speed: | 1 km/h / 0,6 mph |

| DRIVE UNIT      |                           |
|-----------------|---------------------------|
| Tier 3A         | CAT 2.2 NA - 49HP / 36 kW |
| Tier 4 Final    | CAT 2.8 NA - 74HP / 55kW  |
| Diesel tank:    | 190 L / 50 US gallon      |
| Hydraulic tank: | 190 L / 50 US gallon      |



## OPTIONS

- > Belt upgrade  
4-ply reinforced belt for less wear
- > Chevron belt
- > Stage V - Deutz 2.9 L4 - 67HP / 50kw
- > Dust cover
- > Wheeled version

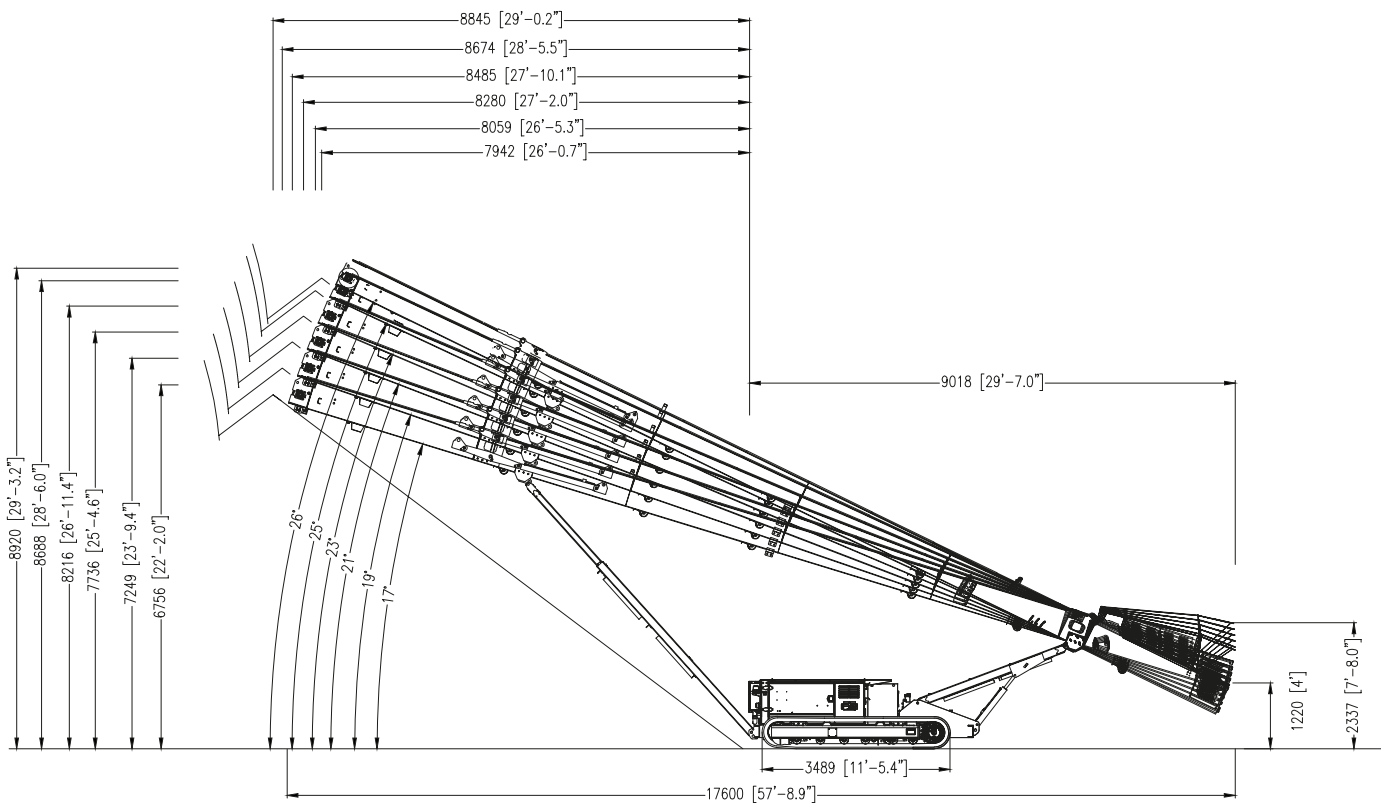


# DIMENSIONS

**RST18**

## Working dimensions

|         |                               |
|---------|-------------------------------|
| Length: | 16,60 - 18,30 m / 54'6" - 60' |
| Width:  | ~ 2,30 m / 7'7"               |
| Height: | 8,40 m / 27'7"                |



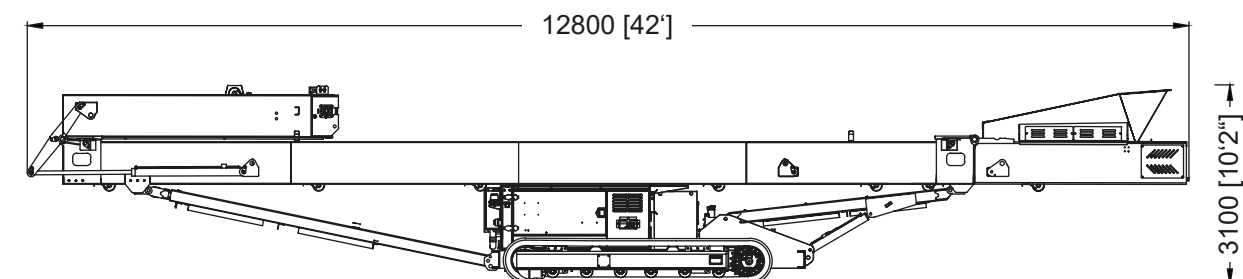
| Angle (Y) | Discharge height (X) | Stockpile radius (Y) |
|-----------|----------------------|----------------------|
| 26°       | 8,92 m / 29'3"       | 7,94 m / 26'1"       |
| 25°       | 8,68 m / 28'6"       | 8,05 m / 26'5"       |
| 23°       | 8,21 m / 26'11"      | 8,28 m / 27'2"       |
| 21°       | 7,73 m / 25'5"       | 8,48 m / 27'10"      |
| 19°       | 7,25 m / 23'9"       | 8,67 m / 28'5"       |
| 17°       | 6,75 m / 22'2"       | 8,84 m / 29'         |

# TRANSPORT DIMENSIONS

**RST18**

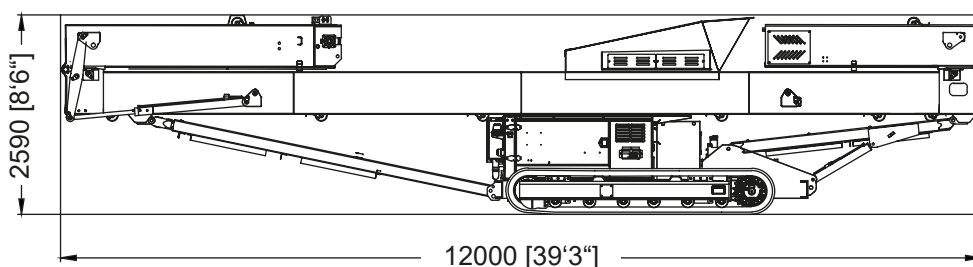
## Standard

|         |                  |         |                     |
|---------|------------------|---------|---------------------|
| Length: | 12,80 m / 42'    | Height: | 3,10 m / 10'2"      |
| Width:  | 2,14 m / 7' 1/3" | Weight: | 11,0 t / 24,300 lbs |



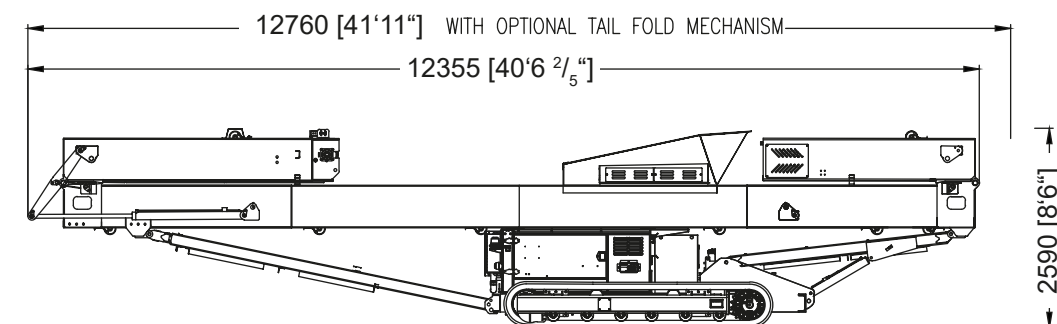
## For container transport

|         |                  |         |               |
|---------|------------------|---------|---------------|
| Length: | 12,00 m / 39' 3" | Height: | 2,59 m / 8'6" |
| Width:  | 2,14 m / 7' 1/3" |         |               |



## With belt upgrade

|         |                       |         |               |
|---------|-----------------------|---------|---------------|
| Length: | 12,76 m / 41' 10 1/2" | Height: | 2,59 m / 8'6" |
| Width:  | 2,14 m / 7' 1/3"      |         |               |



# GENERAL INFORMATION



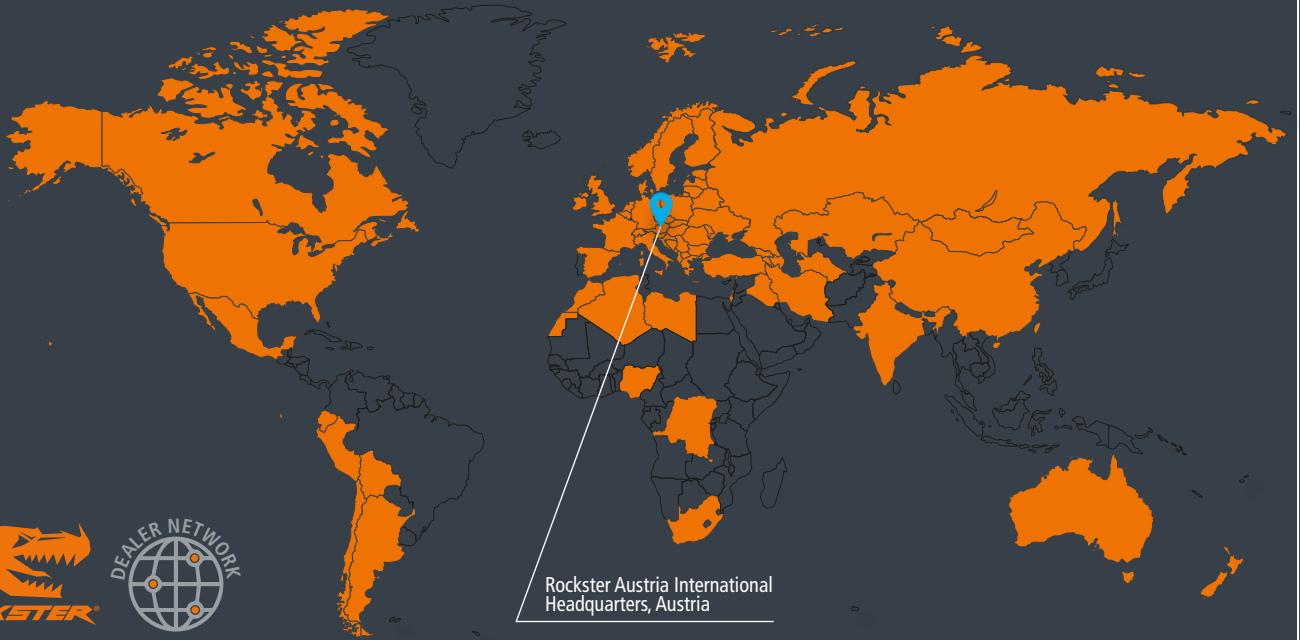
Austrian based manufacturer Rockster Austria International GmbH has a longstanding reputation and the know-how in demolition and screening industry.

The product line includes, among others, track mounted impact and jaw crushers, screening machinery and tracked stackers. "Our mobile crushers and screeners are used for profitable & economical recycling and processing of asphalt, concrete and construction waste, as well as for natural stone.

With innovations like The Original DUPLEX system or double-functional return belt, we repeatedly demonstrate our progressive approach towards improving and developing more efficient recycling & processing methods."

Rockster machines are sold in more than 50 countries worldwide. Our sales partner network guarantees the ideal on-site package of product and service in order to support and secure the daily success of our customers.





Rockster Austria International  
Headquarters, Austria

**SOLD IN MORE THAN 50 COUNTRIES WORLDWIDE**

**COMPETENCE.  
PROGRESS.  
PARTNERSHIP.**

Rockster Austria International GmbH | Matzelsdorf 72, 4212 Neumarkt i.M., Austria  
Tel.: +43 720 70 1212 | office@rockster.at | www.rockster.at



Print- and punctuation errors excepted. Content is subject to change without notice. NOTE - Crusher weight may vary depending on engine type.